

For sale | Flat

Citas jaunceltnes

Rīga, Kipsala

Price

227000 €

4054 €/m²

Description

An extraordinary project "Gypsum Factory" part 2 is located in an intimate part of Kipsala Island green part, on the bank of the Daugava river. The project complex, with an inner garden, courtyard, includes 58 apartments and 4 villas. There is spectacular view from your windows to the Old Town, the Harbor and Riga castle (the Presidents palace). The Red Ship House. The impressive red brick building encloses entire project from the North and so acts as a Mainsail of the complex. Its stunning penthouse, with panoramic windows and terraces, show visionary planning and design; the residence where created for extraordinary and sophisticated individuals. There are marvelous place to relax, bask in the sun, and luxuriate in the breeze and in the view. All apartments have several bedrooms, a fireplace, a balconies, as well windows in both sides of the building, thus insuring maximum exposure to clear light. In each apartment is built-in "Smart system": management and a control of lightening, temperature, conditioner, heated floors, blinds, audio/video and other devices possible from any place of the apartment. Fire-place a genuine piece of work by a recognized Latvian artist working in metal Ainārs Sils, design by Zaiga Gaile. Apartment external door- double wooden door, veneering of the exotic tropical hardwood Iroco tree equipped with high quality handle mechanisms and lock by German manufacturer FSB. Twice-baked finishing bricks in black, red, white and beige colors, applied both in building exterior, and in places, in interior. The required dimensions of the bricks were ordered and manufactured in WIENERBERGER factory in Belgium, the biggest brick manufacturer in the world. Such brick has not been used in Latvia so far. Three layer oiled parquet from the tropical hardwood Iroco tree, which grows in Africa in the Ivory Coast, Ghana and Nigeria. The Iroco is an original tree with thanks to its interesting colors, creates specially warm home atmosphere. The colors shades of the usually

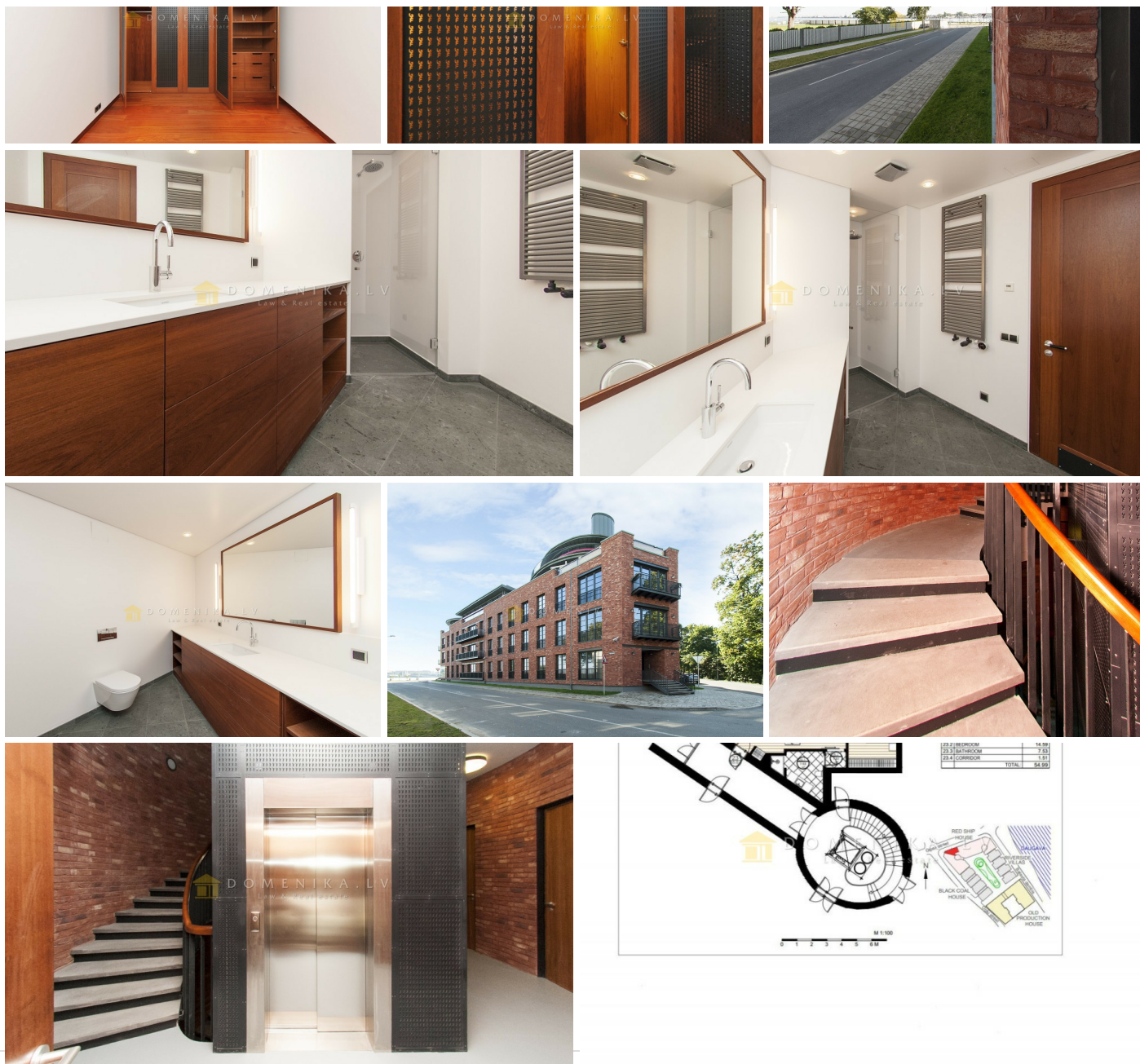
changes from yellowish brown to golden-shine brown. The wood hardness comparison in percentage (assuming that oak hardness is 100%): oak 100% Iroco 114% Aluminium and the Mahogany window frames with triple glass-pack. The Mahogany is an tropical hardwood, and its outstanding good due to its physical mechanical features- great resistance against outdoor conditions. Because of its color (from yellowish till dark red/brown) and the fine pattern it is generally used for luxury furniture and interior elements.



Italian brand BOFFI kitchens equipped with German premium class kitchen appliance of KUPPERSBOSCH brand- refrigerator, stove, cooking hood, microwave oven, oven, warmer drawer, wine cabinet and coffee machine. Terraces is built-in high quality exotic Tatayuba tree board planking ensuring a great endurance against external climatic conditions. Bathrooms equipped with leading German brands of sanitary ceramics and accessories: KERAMAG built-in toilets and bidets, DURAVIT washbasins, equipped with DORNBRACHT water mixers and KEUCE accessories. A free standing Estonian Brand BALTECO SENZO stone bathtub and/ or a glass-structure shower cabin design individually By Zaiga Gaile.

Area:	56 m2
Rooms:	2
Floor:	1
Floors:	4
Parking:	underground
Studio type:	yes
Lift:	yes
Balcony:	yes
Built-in furniture:	yes





DOMENIKA.LV

Phone WhatsApp/Viber

Phone office

www.domenika.lv

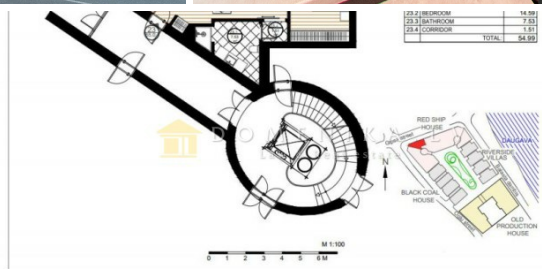
DOMENIKA LATVIA - Law & Real Estate

[+371 29118879](tel:+37129118879)

[+371 67336733](tel:+37167336733)

dainis@domenika.lv

32 Kr.Barona Str., Riga, LV-1011



P Before you print think about the environment