

For sale | Flat
Miera Park House
Rīga, Centrs

Price

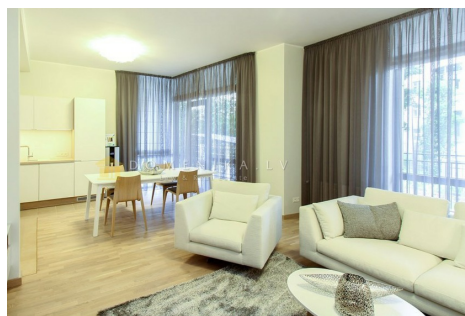
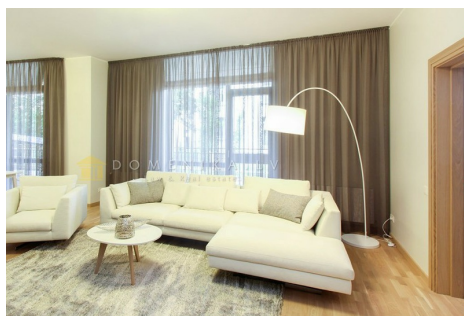
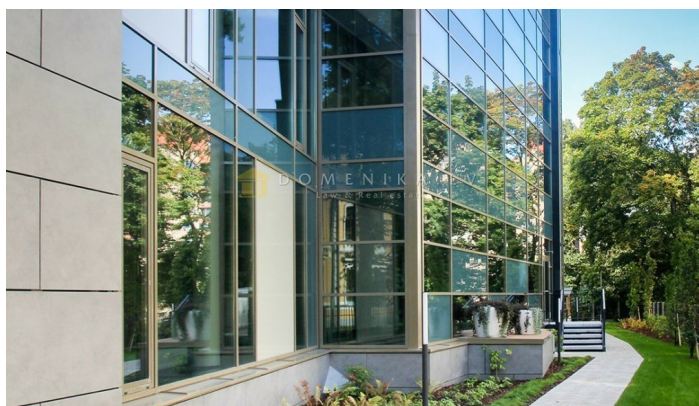
254048 € 2540 €/m²

Description

"Miera Park House" building is 2 blocks (5 storeys and 4 storeys), the facade decoration used natural stone, combined with a matt and transparent glass. The apartments will be prepared for 3 full levels, with the possibility for the new occupants to choose one of the designer's options. The apartments will be fitted high-quality kitchen equipment with all necessary household appliances. Any of the apartment occupants will be able to enjoy also their own balcony or patio to its full potential. In the house basement there is a spacious underground parking for 50 cars and available property storage building in the underground floor. Home area: 3811 m²) will be fenced off, landscaped, illuminated and guarded. For "Miera Park House" occupant maximum comfort, the building will be available to concierge service, who will provide the support apartment maintenance issues.



Area:	100 m ²
Rooms:	3
Floor:	1
Floors:	5
Parking:	underground
Developed infrastructure:	yes
Modern new building:	yes
Concierge:	yes
Lift:	yes
Intercom:	yes
Video surveillance:	yes
Beautiful stairwell:	yes
Not so far to park:	yes
Built-in furniture:	yes
Studio type:	yes



Phone office

[+371 67336733](tel:+37167336733)

www.domenika.lv

dainis@domenika.lv

DOMENIKA LATVIA - Law & Real Estate

32 Kr.Barona Str., Riga, LV-1011

 Before you print think about the environment